

Is PlanMapper For You?

This online tool is designed to improve knowledge of land use direction and increase access to related information. **PlanMapper is for you if:**

- You make decisions about allocating or tenuring Crown resources or lands;
- You explore for minerals, or oil & gas and you need to know land use issues beforehand;
- You are involved in diversifying or growing community economies;
- You are responsible for managing specific aspects of Crown lands and resources;
- You are involved in developing and monitoring land use plans;
- You have a specific stake, tenure, interest or business relying on Crown land and resources;
- You need to understand the varied land use interests making up diverse communities;
- You are a forest planner or manager;
- You are doing research on land use and resources management.

This application combines a map interface with a database and a powerful search engine so you can pin-point your area of interest and define your search. In seconds, your defined search scans thousands of pages of plans to inform you which land use information pertains to your area of interest.

"PlanMapper is an important tool because it will help my members easily sift through all the land use planning material so they know where they can go to work"

*Dan Jepsen, CEO & President,
Association of Mineral Exploration BC*

PlanMapper Partners :

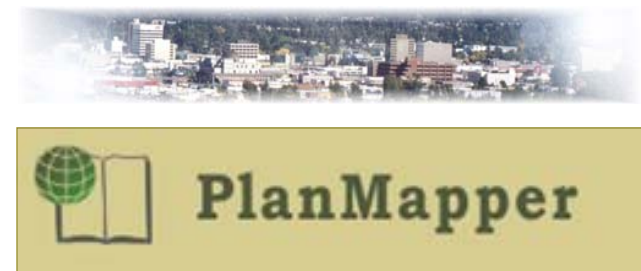


For Information Please Contact:

McGregor Model Forest Association
Phone: (250) 612-5840
E-mail: dan.adamson@mcgregor.bc.ca

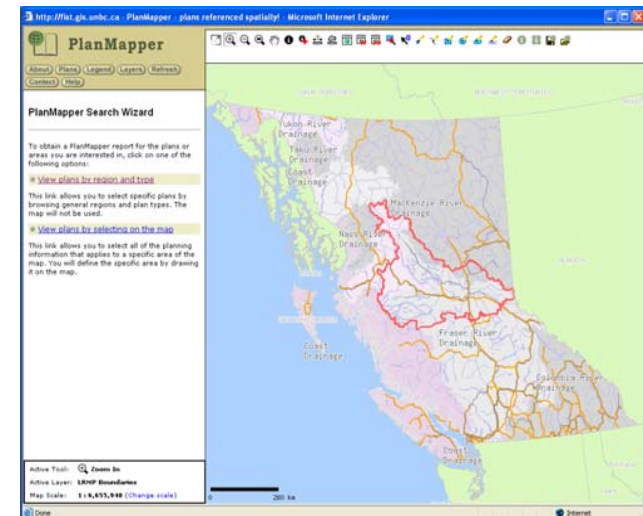
or

Scott Emmons, Senior Lab Instructor (GIS)
University of Northern British Columbia
Phone: (250) 960-6486
E-mail: emmons@unbc.ca



www.planmapper.ca

An On-Line Tool for
Searching Land Use Plans



VISION: Making land use plans and associated information easily accessible in a simple-to-use, efficient and effective tool.

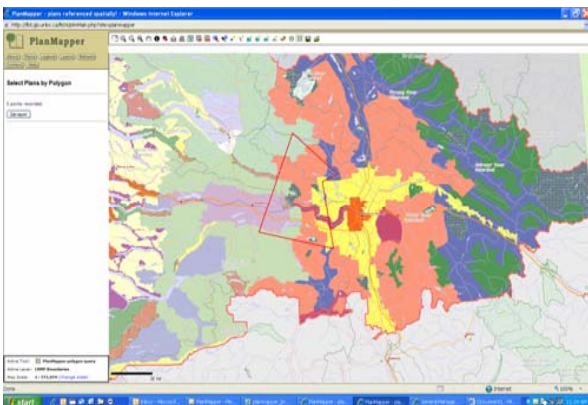


Supporting Responsible and Informed Resources Management and Development

Furthering Our Investment

Over the past decade, millions of dollars and countless hours of volunteer time has been invested in producing land use plans across British Columbia. These plans are complex and lengthy, making them difficult to use as a source for researching site-specific interests. In addition, plans are continually being amended and updated, and now, First Nations have been starting a number of their own land use plans. PlanMapper allows the user to access and search the approved land use information available in the user's area of interest.

The Search, Made Easy



By drawing any shape on the online map of BC, PlanMapper will generate a colour-coded map and a report of all the land use direction for the area for potential resource developers, exploration sectors, land use and tenure decision-makers. PlanMapper will also provide either a direct link or the appropriate website for related information.

“Anyone who needs to get planning information fast will appreciate the ease and speed of PlanMapper”
Dan Adamson, General Manager,
McGregor Model Forest Association

Map Layers

- Plan Areas**
 - LRMP Boundaries
 - Vanderhoof LRMP RMZs
 - Lakes LRMP RMZs
 - Bulkley LRMP RMZs
 - Prince George LRMP RMZs
 - Fort St. James LRMP RMZs
 - Morice LRMP Proposed RMZs
- Base Information**
 - Roads 10k (Geobase)
 - Cities 2mil
 - Transportation 2mil
 - Rivers 2mil
 - Water 2mil
 - Transportation and Rivers 6mil
 - Lakes and Rivers 6mil
- Administrative**
 - Major Watersheds
 - Major Drainages
 - Parks
 - Forest Districts
 - Forest Regions
 - Regional Districts
 - OBAC Boundary
- Grids**
 - UTM Zones
 - 250k Grid
 - 20k Grid

With many map layers to choose from, users are given the opportunity to include as much or as little information as they need to have displayed. In the demonstration version that has been developed to date, several Land and Resource Management Plans (LRMP) falling within the bounds of the Omineca Beetle Action Coalition area are presented. As the tool is developed, further plans of various types and complexity from across the province will be added.

Reports to You in Seconds!

Land use plans can be hundreds of pages long and a single plan can provide direction covering millions of hectares. You don't have time to search a huge plan for your specific topics of interest. When you use PlanMapper, your defined searching is done for you. In seconds, a report is provided on your screen showing only those parts of the land use plans that pertain to your area of interest.

Our Goal:
Providing you with the planning information you need in as little time as possible.

Compatible with Other Tools

PlanMapper allows searches both within and between land use plans, and serves a different purpose than the Province's Integrated Land & Resource Registry, which provides compatible information on legal interests and tenures: ilmbwww.gov.bc.ca/ilrr/ILRR.htm

PlanMapper will also provide links to other important resource information such as mineral information from GeoScienceBC. In this way, PlanMapper will serve as a useful "hub" of related and current information on other sites.



Next Steps

Over the next 6 months, PlanMapper will continue to be improved and expanded, adding new plan layers as they become available, and extending planning information across B.C. Several technical improvements will also be in progress to improve the data-base, the web-page tools and how plans are loaded into the data-base.

If you would like to join our partnership team to participate in the continued development of this exciting new application, please contact us (information on the back of this brochure).