



# Forestry Career Networking 2008

## As a Forestry Employer are you....

- ✓ Looking to find the best and brightest employees?
- ✓ Looking to meet students and start building relationships
- ✓ Need to fill positions this year?
- ✓ Want more resume's from local students and soon-to-be graduates?

## Then....you really need to attend this event!!!

If you have been wondering where all of the forestry students and graduates are, look no further! They are all at this location really hoping to find out about career/job options.

When: February 7, 2008 Where: PG Men's Soccer League Field House (next to the Aquatic Centre) Time: 5:00 p.m.
--

**Last year we had more than 30 students attend!**

## Some of the comments:

- ✓ the turnout was great
- ✓ The attendance of many students from our forestry programs along with faculty from both institutions also was very encouraging
- ✓ I am planning on attending this event, what can I say, free food and forestry discussion what could make a better evening!

## Evening format:

- Chili cook-off (employers to provide, students to judge)
- Bring your favourite chili in a crock pot and an extension chord. Your chilli will be sampled and judged (there will be prizes). We will provide bowls and spoons. Bring an item of swag for the door prize draws.

## Presentations

- To round out the evening an information session will be offered on the topic of employment in the forest sector.

Employers, if you want to participate you need to RSVP: Ed Morrice at 562-2131 local 5215 or by e-mail [morrice@cnc.bc.ca](mailto:morrice@cnc.bc.ca). Details will be provided at that time.

# AGENDA

February 7, 2008

## Prince George Men's Soccer Field House

(Across from the aquatic centre)

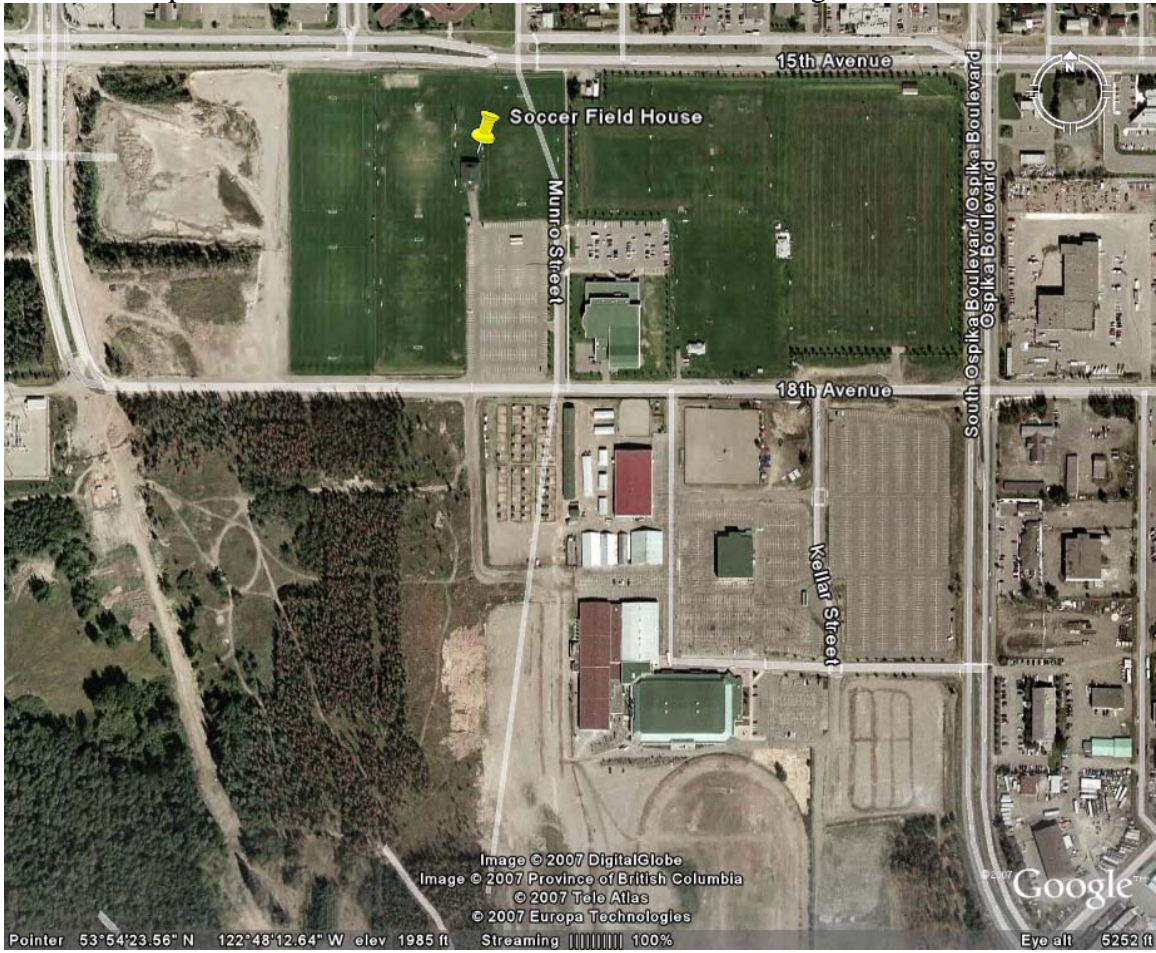
This is a layered event with several objectives...

1. Introduce students and employers in a first step to building a relationship in an informal setting,
2. Provide some information to both employers and students on the current and developing employment climate,
3. Recruit students to the CIF and the ABCFP, both excellent organizations that can facilitate networking opportunities.
4. An opportunity for employer groups to present current and future needs
5. Exchange of contact information between participants.

4:00 p.m.	Set-up
5:00 p.m.	Arrival of students and social
5:15 p.m.	Introduction
5:30 p.m.	Chili sampling and networking
7:00 p.m.	Presentation(s) <ul style="list-style-type: none"><li>▪ Employer group representative outlining their current and future employment opportunities</li><li>▪ TBA How to make the most of job opportunities in the current market</li></ul>
8:00	Chili contest winners announced

Employers, if you want to participate you need to RSVP: Ed Morrice at 562-2131 local 5215 or by e-mail [morrice@cnc.bc.ca](mailto:morrice@cnc.bc.ca). Details will be provided at that time.

Location Map of PG Men's Soccer Field House in Prince George



Employers, if you want to participate you need to RSVP: Ed Morrice at 562-2131 local 5215 or by e-mail [morrice@cnc.bc.ca](mailto:morrice@cnc.bc.ca). Details will be provided at that time.